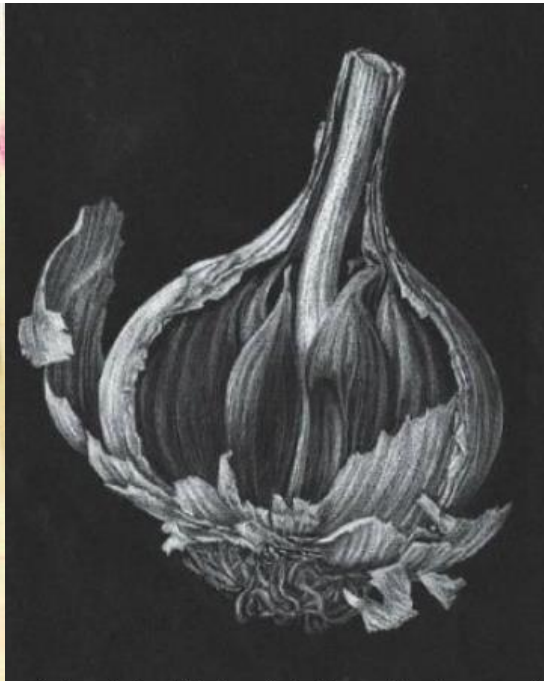


**We are learning to:**

- Visually analyse an object inspired by the experimental style of Artist Jim Dine.

**We are learning by:**

- Analysing the characteristics of the Artists work
- Experimenting with a variety of different media, materials and drawing techniques inspired by his exemplar pieces .



Garlic by Julia Trickey (chalk on black paper)



**Year 12 Art and Design Summer Home Learning :**

Complete an expressive observational study page inspired by Jim Dine. It should be completed from an interesting natural form, using an inventive mix of media.